

Historic, Archive Document

Do not assume content reflects current scientific knowledge, policies, or practices.



Old Colony Nurseries

62.39

80



Old Colony Nurseries

Plymouth, Massachusetts

T. R. Watson



U.S. DEPARTMENT OF AGRICULTURE,
WASHINGTON, D. C.

ANSWERS TO SOME QUESTIONS.

All plants, shrubs, or trees offered in this catalogue can be planted with success in the spring.

The planting season varies; sometimes beginning as early as March 20, sometimes as late as April 6.

All spring planting should be completed by May 15.

For fall planting the best results are obtained with Herbaceous Perennials, from September 15 to November 1. They should be protected with a mulching of pine needles or some other like material.

If it is desired to plant Evergreens in the fall they should be planted the last week in August or the first week in September. Here the percentage of loss on Evergreens planted in the fall has always been much larger than on the same stock planted in the spring.

All deciduous shrubs and trees, including all the fruits offered, can be planted in the fall as readily as in the spring. These are generally ripened enough to ship from October 20 to November 1; but occasionally these dates must be advanced. From the time they are ripe until the ground is frozen it is perfectly safe to plant; the later the better.

Azaleas, Hybrid Roses, and Rhododendrons should be planted in the spring, only.

Planting:—Puddle every plant in mud about the consistency of thick cream. Let the hole be large enough to take the roots easily. Tamp the earth in about the roots as firmly as you would set a fence post. This for thoroughly well cultivated ground. If the ground is sod; trench to the depth of two feet, leaving the fine soil on top. Single trees or shrubs planted in sod; make the hole at least three feet in diameter and two feet deep; put the sod in bottom of the hole and use the fine soil to plant the tree.

Manure:—Well rotted stable manure the best; hard wood ashes good; if you cannot get any of these, use any commercial fertilizer.

Starved plants will not thrive. Plants overgrown with weeds and grass will not grow. They should be hoed once in ten days.

1840-1903

OLD COLONY NURSERIES

T. R. WATSON

PLYMOUTH, MASSACHUSETTS

No. 80

PRICE LIST

Of Hardy Ornamental Trees, Hardy Flowering Shrubs, Evergreens, Roses, Bulbs, Herbaceous Plants, Fruits, etc. for Parks, Cemeteries, Gardens and all public and Private Grounds

1840

T. R. WATSON

1903

OLD COLONY NURSERIES, PLYMOUTH, MASS., U. S. A.

Home or foreign orders filled with the utmost care and promptness

GUARANTEE. We take the greatest pains to have every plant marked true to name Any plant incorrectly marked will promptly be replaced, or money returned. We do not guarantee any more than the original cost of the plant.

We can not guarantee plants to live, at the prices of this catalogue. We send out young, thrifty plants, which should live if properly planted and cared for.

ORDERS. Please use the order sheet and fill out all the blanks. Write your name and shipping address (also P. O. address, if different) as clearly as possible. Say whether you will have them sent by express or freight. Remit by check or P. O. order. Stamps for small amounts. Please follow the order of the catalogue and carry out prices.

PACKING is charged at cost of the case or bale.

Delivery of all packages to freight or express free.

We do not pay either freight or express.

All plants at the risk of the purchaser after they are delivered to the public carrier.

Notify me at once of any delay in receipt of stock.

Notify me promptly of any error in filling order.

From the following lists; five at the ten rate; fifty at the hundred rate.

Deciduous Trees and Shrubs.

	EACH.	TEN.	100.		EACH.	TEN.	100.
ACER colchicum rubrum.....	4 to 5 ft.	\$.25	\$2.25				
— dasycarpum, Silver Maple	6 to 7 ft.	.25	2.25				
— Weirs Cut-leaved Maple	5 to 6 ft.	.50	4.50				
— Monspessulanum	3 to 4 ft.	.25	2.25				
— palmatum, Japanese Maple.	2 to 3 ft.	.30	2.50				
— — — — var. atropurpureum	18 to 24 in.	.50	4.50				
— Pennsylvanicum, striped bark	3 to 4 ft.	.25	2.25				
— platmoides, Norway Maple	2 to 3 ft.	.15	1.25	\$10.00			
— — — —	5 to 6 ft.	.25	2.25				
— — — —	9 to 10 ft.	.35	3.25				
— — — —	2 in caliper, 12 to 15 ft.	1.00					
— — var. Schwedleri	3 to 4 ft.	.25	2.25				
— Pseudo-Platinus, Sycamore or							
Scotch Maple.....	3 ft.	.15	1.25				
— — — —	5 to 6 ft.	.25	2.25				
— rubrum	3 to 4 ft.	.25	2.25				
— saccharinum, Sugar or Rock Maple							
.....	4 to 5 ft.	.15	1.25	10.00			
— — — —	7 to 8 ft.	.25	2.25	20.00			
— spicatum	4 to 5 ft.	.50	4.50				
— Tartaricum var., Ginnala ...	2 to 3 ft.	.15	1.25	10.00			
— — — —	4 to 5 ft.	.25	2.25				
<p>The superb maple, Acer Tataricum Ginnala, is the most showy of all the autumn maples, with its deeply incised foliage of the most brilliant scarlet. It is much earlier to turn than any other maple. Extra. Fine in masses.</p>							
ÆSCULUS Hippocastanum, Horse-							
chestnut, white	3 to 4 ft.	.25	2.25				
— — — —	6 to 7 ft.	.50	4.50				
— — — — var. double white	5 to 6 ft.	.50					
— macrostachia, Dwarf Pavia	2 to 3 ft.	.35	3.00				
— rubicunda, Scarlet Horse-Chestnut							
.....	2 to 3 ft.	.35	3.00				
ALDER, black. See Ilex.							
ALNUS glutinosa, English Alder							
.....	3 to 4 ft.	\$.25	\$2.25	\$			
— incana, common Alder ...	3 to 4 ft.	.25	1.50	10.00			
ALMOND, double white	18 in.	.35	3.00				
— — rose	18 in.	.35	3.00				
ALTHEA. See Hibiscus.							
AMELANCHIER Canadense ..	3 to 4 ft.	.25	2.25				
AMORPHA fruticosa, Indigo Shrub							
.....	3 to 4 ft.	.25	2.50				
ANDROMEDA arborea	2 to 3 ft.	.25	2.25				
— Mariana25	2.25	20.00			
— polifolia50	4.50				
APPLE, flowering. See Pyrus.							
ARALIA spinosa, Hercules Club,	4 to 5 ft.	.35	3.00				
ASH. See Fraxinus.							
— Mountain. See Pyrus.							
AZALEA arborescens, white, tinted rose		.50	4.50				
— calendulacea, orange50	4.50				
— mollis, rich orange and red25	2.25	20.00			
— — — — larger plants50	4.50	40.00			
— nudiflora, rosy red50	4.50				
— pontica, Ghent hybrids, in ten named							
varieties60	6.00				
— Vaseyi, delicate rose50	4.50				
— viscosum25	2.25				
<p>Azalea mollis, from Japan, is perfectly hardy and is one of the finest plants of recent introduction. The flowers are a rich orange, others are brilliant red, very large and abundant. This is now largely planted and should be in every garden.</p>							
BACCHARIS halimifolia, late white							
bloom.....	3 to 4 ft.	.25	2.25	20.00			
BAYBERRY. See Myrica.							
Beach Plum. See Prunus.							
Beech. See Fagus.							
BERBERIS Thunbergii, Japanese Bar-							
berry, light plants ...	12 to 18 in.	.25	1.50	10.00			

	EACH.	TEN.	100.		EACH.	TEN.	100.
BERBERIS vulgaris, Common Barberry 12 to 18 in.	\$0.25	\$1.50	\$10.00	CEPHALANTHUS occidentalis, But- ton Bush	\$0.25	\$2.25	\$
— — var. purpurea, Purple leaved Bar- berry		1.50	10.00	CERCIDIPHYLLUM Japonicum50	4.50
— — — — — 1½ to 2 ft.		1.50	12.00	3 to 5 ft.			
— — — — — 2 to 3 ft.	.25	1.50	10.00	CERCIS Canadense, Judas Tree or Red Bud25	2.25	
BETULA alba, Scotch Birch ... 3 to 4 ft	.25	1.50	10.00	4 to 5 ft			
— — var. laciniata, Cut-leaved Weep- ing Birch50	4.50		CHEERRY. See Prunus.			
— lutea, Yellow Birch25	2.25		CHESTNUT. See Castanea.			
— nigra, Red Birch25	2.25		CHIONANTHUS Virginica, White fringe35	3.00	
— papyrifera, Canoe Birch ... 3 to 4 ft.	.15	1.25	12.00	CHOKEBERRY. See Pyrus.			
— — — — — 5 to 6 ft.	.25	2.25		CLADRASTIS tinctoria, Yellow Wood 4 to 5 ft.	.25	2.25	
— populifolia, Gray Birch ... 2 to 3 ft.	.15	1.25	10.00	CLEMATIS. See Vines.			
BOHEMIAN OLIVE. See Elæagnus.				CLETHRA alnifolia, Sweet Pepper Bush fragrant15	1.25	
BROOM. See Cytisus.				CORCHORUS. See Kerria			
BUCKTHORN. See Rhamnus.				CORNUS alternifolia25	2.25	
CALYCANTHUS floridus, Sweet- scented shrub25	2.25		— circinata25	2.25	
CARAGANA arborescens, Siberian Pea Tree25	1.50		— florida, Flowering Dogwood 2 to 3 ft.	.25	2.25	
CARPINUS betulas, European Horn- beam		1.50	10.00	— — — — — 1 to 2 ft.	.15	1.25	
— — — — — 2 to 3 ft.	.25	2.25		— — rubra, Red Flowering Dogwood	.50		
CARYA alba, Shagbark35	3.00		— Mas, Cornelian Cherry 2 to 3 ft.	.25	2.25	15.00
— amara25	2.25		— — — — — var from Japan .2 to 3 ft.	.25	2.25	15.00
— microcarpa25	2.25		— paniculata25	2.25	15.00
— porcina, Pig-nut collected25	2.25		— sanguinea25	2.25	15.00
— tomentosa, Mocker nut25	2.25		— sericea25	2.25	15.00
CASTANEA pumila, Chinquapin25	2.25		— stolonifera, Red Osier, var. Siberica 2 to 3 ft.	.25	2.25	15.00
— sativa, var. Americana, American Sweet Chestnut25	2.25	20.00	The last three have bright red bark. Cornus Siberica the brightest red of any Cornus.			
CATALPA speciosa15	1.25	10.00	CORYLUS Avellana, English Filbert... 4 to 5 ft.	.25	2.25	
— — — — — 5 to 7 ft.	.25	2.25		— — Cosford25	2.25	
— — 2 in caliper	1.00			— — Nottingham25	2.25	
CEANOTHUS Americanus, New Jersey Tea25	2.25	15.00	— — Prolific25	2.25	
CELTIS occidentalis, Hackberry 4 to 5 ft	.25	2.25		COTONEASTER Simonsii, scarlet ber- ries25	2.25	
— — — — — 6 to 8 ft	1.00						

	EACH.	TEN.	100.		EACH.	TEN.	100.
CRATÆGUS Crus-galli, Cockspur				ELÆAGNUS Hortensis, Bohemian			
— I to 2 ft.	\$0.15	\$1.25	\$10.00	— Olive	3 to 4 ft.	\$0.15	\$1.25
— mollis15	1.00		— longipes, fine fruit, edible.	I to 2 ft.	.25	2.25
— Oxycantha, Hawthorne, single white				ELDERBERRY. See Sambucus			
— I to 2 ft.15	1.25		ELM. See Ulmus			
— — — — scarlet50	4.50		EUONYMUS Americanus	2 to 3 ft.	.25	2.25
— — — — double pink50	4.50		— Europæus, Burning Bush 3 to 5 ft.		.25	2.25
— — — — scarlet50	4.50		— Japonicus, var. radicans viridis			
— — — — white50	4.50		3 yrs.25	2.25	15.00
CURRENT. See Ribes				EXOCHORDA grandiflora, Pearl Bush			
CYPRESS Deciduous. See Taxodium				3 ft.25	2.25	
CYTISUS capitatus15	1.25		FAGUS ferruginea, American Beech			
— scoparius, Scotch Broom25	2.25	15.00	2 to 3 ft.25	2.25	15.00
DAPHNE Mezereum alba50	4.50		— sylvatica, European Beech5 to 6 ft.	.35	5.00
— rubra50	4.50		— — var. Fern-leaved	3 to 4 ft.	1.00	8.00
DESMODIUM penduliflorum, late,				— — — Purple-leaved, grafted 5 to 6 ft.		1.00	9.00
mass of purple pea shaped				— — — — — seedlings	5 to 6 ft.	.50	4.50
flowers25	2.25		— — — Weeping	4 to 5 ft.	1.00	
DEUTZIA gracilis25	2.25	15.00	FILBERT. See Corylus			
— parviflora25	2.25		FORSYTHIA Fortunei	1 to 2 ft.	.25	2.25
— scabra (crenata)25	2.25	15.00	— intermedia	2 to 3 ft.	.25	2.25
— double white25	2.25	15.00	— suspensa or weeping	4 to 5 ft.	.25	2.25
— — — — rose25	2.25	15.00	— viridissima	3 to 4 ft.	.25	2.25
— — Fortune's New White (single)							
2 to 3 ft.25	2.25	15.00	These are all the so-called Golden Bells, Yellow flowers,			
— — Pride of Rochester, double white				early in the spring, before the foliage.			
tinted with rose25	2.25	15.00	FRAXINUS Americana, American ash			
— — Wellsii25	2.25	15.00	6 to 8 ft.25	2.25	
Strong heavy plants of above varieties				— ornus, Flowering Ash5 to 6 ft.	.25	2.25
of Deutzia50	4.50		— pubescens8 to 9 ft.	.25	2.25
DIERVILLA florida, Weigelia rosea				For other varieties sometimes called Ash. See Pyrus			
2 to 3 ft.25	2.50		FRINGE TREE. See Chionanthus and Rhus			
— — amabilis25	2.25		GENISTA TINCTORIA, Wood-waxen			
— — vareigata25	2.25		Salem or Beverly Broom			
— sessilifolia25	2.25		2 to 3 ft.15	1.25	
DIRCA plaustris25	2.25		GINKGO BILOBA, Salisburia			
DOGWOOD. See Cornus				4 to 5 ft.35	3.00	
ELÆAGNUS hortensis, Bohemian.				GLEDITSCHIA TRIACANTHOS			
Olive25	2.25	20.00	Three-thorned Acacia 3 to 4 ft.	.15	1.25	

	EACH.	TEN.	100.		EACH.	TEN.	100.
GYMNOCLADUS Canadensis, Ken- tucky Coffee Tree 4 to 5 ft.	\$0.25	\$2.25	\$	KERRIA Japonica, double yellow	\$0.25	\$2.25	\$
HACKBERRY. See Celtis.				— variegata25	2.25	15.00
HALESIA tetraptera, Silver Bell 5 to 7 ft.	.25	2.25		KÆLREUTERIA paniculata 2 to 3 ft.	.25	2.25	15.00
HAMAMELIS Virginiana, Witch-hazel 2 to 3 ft.	.25	2.25	15.00	LABURNUM vulgare cut back to 4 ft.	.50	4.50	
HAWTHORN. See Cratægus.				LARIX Europæa 3 to 4 ft.	.25	2.25	
HAZEL. See Corylus				LESPEDEZA bicolor25	2.25	
HIBISCUS Syriacus, Althea, double named sorts 2 to 3 ft.	.25	2.25	20.00	— Sieboldiana, Desmodium penduli- florum 2 to 3 ft.	.25	2.25	
— — — single — — 1 to 3 ft.	.25	2.25		LIGUSTRUM Ibota, New Japan Privet 12 to 18 in.	.15	1.50	10.00
— frutescens, seedlings, single 2 to 3 ft.	.15	1.25		— — — — — 2 to 3 ft.	.25	2.25	
HICKORY. See Carya				— Japonicum, California Privet 1 year 18 to 24 in.		.50	4.00
HIPPOPHÆ rhamnoides, Sea-Buck- thorn 3 to 4 ft.	.25	2.25	15.00	— — — — — 2 to 3 ft.	.15	1.25	6.00
HONEYSUCKLE. See Lonicera				— media, low growing, abundant black berries 4 to 8 in.		1.00	5.00
HOP-TREE. See Ptelia.				— — — — — 2 to 3 ft.	.15	1.25	10.00
HORNBEAM. See Carpinus				— vulgare, Common Privet or Prim 1 year 1 to 2 ft.		.50	4.00
HORSE-CHESTNUT. See Æsculus.				— — — — — 2 to 3 ft.	.15	1.25	5.00
HYDRANGEA paniculata 2 ft.	.25	2.25	20.00	— Regliaum 2 to 3 ft.	.15	1.25	8.00
— — var. grandiflora 1 to 2 ft.	.15	1.25	10.00	All the Ligustrums make first class hedges. L. Ibota, media and Reglianum are hardier than L. Japonicum.			
— — — — — 3 ft.	.25	2.25	20.00	LILAC. See Syringa			
— vestita 1 to 2 ft.	.35	3.00		LINDEN. See Tilia			
HYPERICUM aureum, large yellow flowers 1 to 2 ft.	.50	2.25		LINDERA Benzoin, Spice Bush 1 to 2 ft.	.25	2.25	
— prolificum, St. John's-Wort 2 to 3 ft.	.25	2.25	15.00	LIQUIDAMBAR Styraciflua, Sweet Gum 4 to 6 ft.	.35	3.00	
ILEX verticillata, Black Alder 2 to 3 ft.	.25	2.25	15.00	LIRIODENDRON Tulipifera, Tulip Tree 5 to 6 ft.	.50	4.50	
INDIAN CURRANT. See Symphoricarpus				— — — — — 2 to 3 ft.	.25	2.25	15.00
JAPANESE PEAR. See Pyrus				LOCUST. See Robinia			
JUDAS TREE. See Cercis				LOMBARDY POPLAR. See Populus			
JUGLANS cinerea, Butternut .4 to 5 ft.	.35	3.00		LONICERA. See Vines			
— nigra, Black Walnut 4 to 5 ft.	.35	3.00		— Alberti25	2.25	
JASMINIUM nudiflorum small	.25	2.25	15.00	— alba verginalis25	2.25	
In Plymouth, this plant has frequently been covered with its bright yellow flowers in Dec. and Jan., in the open ground				— Bella alvida25	2.25	
KERRIA Japonica (Corchorus), single yellow25	2.25	15.00	— rosea25	2.25	
				— — atrosea25	2.25	

	EACH.	TEN.	100.
LONICERA <i>Bella candida</i>	\$0.25	\$2.25	\$15.00
— <i>chrysantha</i>25	2.25	
— <i>fragrantissima</i>25	2.25	
— <i>fructu cœrulea</i>25	2.25	
— <i>Morrowi</i>25	2.25	15.00
— <i>Ruprectiana</i>25	2.25	15.00
— <i>Tartarica</i> , pink variety25	2.25	

The above are the best varieties of the Tree or Tartarian Honeysuckle.

MAGNOLIA <i>accuminata</i> , Cucumber Tree	3 to 4 ft.	.50	4.50	
— <i>glauca</i>	1 to 2 ft.	.50		
— <i>purpurea</i>	2 to 3 ft.	.50	4.50	
— <i>Soulangiana</i>	3 ft.	1.00		
— <i>speciosa</i>	3 ft.	1.00		
— <i>stellata</i> (<i>Haleana</i>)	1 to 2 ft.	1.00		
— <i>Umbrella</i> (<i>tripetala</i>)	5 to 7 ft.	.50	4.50	
MYRICA <i>asplenifolia</i> , Sweet Fern	1 to 2 ft.	.25	2.25	
— <i>cerifera</i> , Bayberry	1 ft.	.25	2.25	15.00
NEGUNDO <i>aceroides</i> , Box Elder	8 to 10 ft.	.25	2.25	
— — — — 2 in. caliper	12 to 15 ft.	1.00		
NERVIUSIA <i>Alabamensis</i>	3 ft.	.25	2.25	
NYSSA <i>sylvatica</i> , Tupelo	3 ft.	.50	4.50	
OAK. See <i>Quercus</i>				
PÆONIA <i>arborea</i> , Tree Peonies 2 yrs. pot grown75	7.00	
— — — — 3 yrs. from open ground		1.00		

The following varieties in 2 yr. pot plants

Athlete, rose lilac; Countesse de Tuder, salmon rose; Elizabeth, rose; Jeanne d'Arc, light pink; Flora, white; Jewell of Chusan, pure white; Mme. Stuart, reddish rose; Osiris, dark red; Regina Belgica, rose; Reine des Violettes, violet purple; Roi Leopolo, whitish violet; Roseolens odorata, clear rose; Louis Mouchelet, rose; Triomphe de Vandermaelen, rose purple; Zenobia, purple.

The following varieties in 3 yr. from open ground:

Alba Belgica, whitish; *Fragrans maxima*, dble red; Mme. Andremont, light rose; Mme. Jules d'Orban, salmon rose; Mlle Sophia, whitish; Marie, rose; Picta, white; Reine des Fleurs, lilac; *Semperflorens alba*, white; Triomphe de Milan, rose.

	EACH.	TEN.	100.	
PAVIA. See <i>Æsculus</i>				
PHILADELPHUS <i>coronarius</i> , Mock Orange, Syringa	3 to 4 ft.	.25	2.25	15.00
— — <i>aureus</i> , golden leaved	2 ft.	.25	2.25	
— — <i>speciosissimus</i>	3 to 4 ft.	.25	2.25	15.00
— <i>grandiflorus</i>	3 to 4 ft.	.25	2.25	15.00
PHYSOCARPUS <i>opulifolia</i> ..	3 to 4 ft.	.25	2.25	
— — <i>aurea</i> (<i>Spiraea</i>) golden-leaved ..	2 to 3 ft.	.25	2.25	

PLATINUS <i>occidentalis</i> , American Plane Tree	3 to 4 ft.	.15	1.50	
— — — —	6 to 7 ft.	.25	2.25	
— — — — <i>orientalis</i> , European Plane Tree ..	6 to 7 ft.	.25	2.25	

POPULUS <i>balsamifer</i> , var. <i>candicans</i> ..	6 to 7 ft.	.25	2.25	
— Balm of Gilead	6 to 7 ft.	.25	2.25	
— <i>laurifolia</i> (<i>Certinensis</i>) ..	5 to 7 ft.	.25	2.25	
— <i>monilifera</i> , Carolina Poplar ..	5 to 6 ft.	.15	1.50	10.00
— — — —	7 to 8 ft.	.25	2.25	
— <i>nigra</i> , European Poplar ..	8 to 9 ft.	.25	2.25	
— — — —	12 to 15 ft.	.35	3.00	
— — var, <i>Italica</i> , Lombardy Poplar ..	5 to 6 ft.	.15	1.25	10.00
— — — —	7 to 8 ft.	.25	2.25	15.00

PRIVET OR PRIM. See <i>Ligustrum</i>				
PRUNUS <i>Americana</i>	5 to 6 ft.	.25	2.25	
— <i>avium</i> , Double white Flowering Cherry	4 to 6 ft.	.50	4.50	
— — — — rose —	4 to 6 ft.	.50	4.50	
— — — — white — — Anthony Waterer	3 to 4 ft.	.50		

	EACH.	TEN.	100.		EACH.	TEN.	100.
PRUNUS avium, Anthony Waterer, grafted on standards.....10 ft.	\$1.00	\$		PYRUS Japonica, Pigmaleondwf.	\$0.50	\$	
— Davidiana rose 2 to 3 ft.	1.00			— — umbilicata rosea 2 to 3 ft.	.25	2.25	20.00
— — white 2 to 3 ft.	1.00			— sambucifolia, Elder Leaved Mt. Ash 3 to 4 ft.	.25	2.25	15.00
— Japonica, Double White Flowering Almond 18 in.	.35	3.00		— palustris, Pin Oak 3 to 4 ft.	.15	1.25	10.00
— — — Rose — — 18 in.	.35	3.00		— — — 5 to 6 ft.	.50		
— Pseudo-Cerasus same as Prunus avium — triloba fl. pl. Double Flowering Japanese Plum 3 ft.	.35	3.00		— Robur, English Oak 5 to 6 ft.	.50	4.50	
PTELEA trifoliata, Hop Tree 3 to 4 ft.	.25	2.25		— rubra, Red Oak 2 to 3 ft.	.15	1.25	10.00
— — var. aurea. Golden Leaves 3 to 4 ft.	.35	3.00		— — — 3 to 4 ft.	.25	2.25	20.00
PTEROSTYRAX hispida 2 to 3 ft.	1.00			RHAMNUS catharticus, Buckthorn 18 to 25 in.		.50	4.00
PYRUS Americana, American Moun- tain Ash 4 to 5 ft.	.35	3.00		RHODENDRON Rhodora, Emerson's Rhodora 1 ft.	.25	2.25	
— Aucuparia, European Mountain Ash 6 to 7 ft.	.25	2.25		RHODODENDRON. See Evergreen Shrubs.			
— arbutifolia, red fruited. Choke- berry 3 to 4 ft.	.25	2.25	15.00	RHODOTYPOS kerioides, white flowers and fine foliage 3 to 4 ft.	.25	2.25	15.00
— — var., melanocarpa, Chokeberry 2 to 3 ft.	.25	2.25	15.00	RIBUS Canadense (aromatica) 3 to 4 ft.	.25	2.25	
— betalefolia 3 to 4 ft.	.25	2.25		— copallina, Dwarf Sumac 1 ft.	.15	1.25	10.00
— — 8 ft.	1.00			— Cotinus, Smoke Tree (Purple Fringe) 3 to 4 ft.	.35	3.00	
— Japanese Flowering Apples in the following varieties 4 to 5 ft.	.50	4.50		— glabra 1 to 2 ft.	.15	1.25	10.00
— coronaria, light				— — 2 to 3 ft.	.25	2.25	15.00
— floribunda, rose tinted				— — var. laciniata, Cut leaved Sumac 2 to 3 ft.	.25	2.25	
— — atrosanguinea, red				— typhina 1 to 2 ft.	.15	1.25	10.00
— — Parkmani, deep red, semi double — spectabilis, double white				— — 2 to 3 ft.	.25	2.25	15.00
— — double rose				RIBES aureum, Missouri Currant 2 ft.	.25	2.25	
— Toringo				— Gordonium 2 to 3 ft.	.25	2.25	
One year grafts of the above varieties	.25	2.25	20.00	ROBINIA hispida, Rose Acacia (Locust) 3 to 4 ft.	.25	2.25	
— Japonica, Japan Pear or Quince, mixed sorts 3 to 4 ft.	.25	2.25	15.00	ROSA blanda, collected15	1.25	5.00
— — — — white 2 to 3 ft.	.25	2.25	20.00	— Carolina 2 to 3 ft.	.25	2.25	10.00
— — Maulei 2 ft.	.25	2.25	20.00	— Canina 3 to 4 ft.	.25	2.25	
				— Crimina Rambler 2 to 3 ft.	.25	2.25	20.00
				— lucida, common Wild Rose15	1.25	

	EACH.	TEN.	100.
ROSA lucida alba, new single white rose	\$0.50	\$4.50	\$40.00
This is supposed to be a sport from R. lucida. The stems bright yellow; bloom, pure white and very profuse, covered later with bright red berries. It is as hardy as R. lucida and far more beautiful.			
— multiflora, large clusters of small white flowers25	2.25	15.00
— rubrifolia, red foliage 2 to 3 ft.	.25	2.25	20.00
— rubiginosa, Sweet Brier or Eglantine (true) 3 to 4 ft.	.25	2.25	15.00
The Lord Penzance Hybrid Sweet Briars in the following varieties: 2 to 3 ft. .25 2.25 20.00			
Amy Robsart, Anne of Geirstein, Brenda, Green Mantle, Catherine Seyton, Edith Bellenden, Flora McIvor, Lord Penzance, Lucy Bertram, Meg Merriles, Rose Bardwardine.			
— rugosa rubra, Crimson..... 2 to 3 ft.	.25	2.25	20.00
— — alba, white 2 to 3 ft.	.25	2.25	20.00
— — Comte d'Espresmesnil 2 to 3 ft.	.25	2.25	
— — Mme. Geo. Bruant, semi-double white25	2.25	
The Rosa rugosa and varieties are especially desirable for the good foliage. Insects do not attack them.			
— setigera, single Prairie Rose, nothing better25	2.25	20.00
— stylosa25	2.25	
— spinosissima, small plants, in following single varieties50	4.50	
Grandiflora, listifolia, myracantha, Picta			
— Wichuraiana, a single white trail-or climbing rose. Fine glossy foliage25	2.25	20.00
..... 4 to 5 ft.	.25	2.25	20.50
ROSES, Garden sorts.			
Climbing sorts:			
Baltimore Belle, white.....	.25	2.25	
Crimson Rambler, crimson clusters25	2.25	20.00

	EACH.	TEN.	100.
Queen of the Prairie, pink.....	\$0.25	\$2.25	\$
Yellow Rambler, Aglaia, yellow25	2.25	
Above, strong plants, usually cut back for shipment.			
Rosa Hybrid Perpetual Roses: grafted low on a stock that does not start easily. Have found these far better than the same varieties on own roots. Well established field grown plants are offered. They should be planted deep in well enriched soil. Plant three or four inches above the graft. Cut back to six inches after planting.			
Prices are.....	.25	2.25	20.00
The following selected varieties are offered:			
Abel Carriere, velvety crimson; Alfred Colomb, carmine; American Beauty, red; Br. de Bonstette, rich maroon; Baron de Rothchild, light rose; Captain Christy, delicate rose; Celine Forestier, light yellow; Coquette des Alpes, white; Fisher Holmes, dark red; Gen. Jacqueminot, dark red; Gen. Washington, crimson; Gloirie Lyonnais, light yellow; John Hopper, bright rose; Jules Magottin, bright rose; La France, silvery rose; Magna Charta, pink; Mme. Gabriel Luizet, soft rose; Margaret Dickson, white; M. P. Wilder, carmine red; Mrs. John Laing, pink; Monsieur Boncenne, dark red; Paul Neyron, dark rose; Harrison Yellow; Persian Yellow; P. C. de Rohan, deep crimson; Ulrich Brunner, cherry red.			
— Soleil d'Or or Golden Sun, New H. P. Yellow Rose.....	.50	4.50	
— Moss Roses, in following varieties..	.25	2.25	
Blanche Robert, white; Henry Martin, red; Salet, pink.			
RUBUS odoratus, Flowering Raspberry			
..... 2 to 3 ft.	.25	2.25	
SALIX ALBA, White Willow..	.15	1.25	10.00
— — vitellina var. Britzensis, golden bark, ends of twigs are red15	1.25	10.00
..... 2 to 3 ft.	.15	1.25	10.00
— — vitellina var. Russian, the best golden willow.....	.15	1.25	10.00
..... 4 to 5 ft.	.15	1.25	10.00

	EACH.	TEN.	100.		EACH.	TEN.	100.
SALIX Babylonica, Napoleon Weeping Willow5 to 6 ft.	\$0.25	\$2.25	\$15.00	SPIRÆA, prunifolia fl. pl.	3 to 4 ft.	\$0.25 \$2.25 \$15.00
— — — — — 3 in. caliper		1.00			— Thunbergii	2 ft.	.25 2.25 15.00
— — var. Wisconsin Weeping Willow5 to 7 ft.	.25	2.25		— tomentosa	3 ft.	.25 2.25 15.00
— myrtifolia	2 to 3 ft.	.25	2.25		— Van Houttei, St. Peter's Wreath	2 to 3 ft.	.25 2.25 20.00
S. myrtifolia grows in symmetrical form, more shrub than tree. A mass of white when the "pussies" are out.					S. Van Houttei is almost always in bloom on Decoration Day.		
— pentadra (laurifolia), Laurel-leaved Willow	3 to 4 ft.	.15	1.50	10.00	STAPHYLEA Colchica (Bumalda),	2 to 3 ft.	.25 2.25
— — — — —5 to 6 ft.	.25	2.25		STEPHANANDRA flexuosa	2 to 3 ft.	.25 2.25
— rosmarinifolia	3 to 4 ft.	.25	2.25		SYRAX Japonica	4 to 5 ft.	.50 4.50
— Solomon's Palm, an exceptionally fine Willow, Bark red. Large "pussies" in Feb. and March	5 to 7 ft.	.25	2.25		SUMAC. See Rhus.		
SAMBUCUS Canadense, Elderberry	1 to 2 ft.	.25	2.25	15.00	SWEET FERN. See Myrica.		
— — var. aurea, fine golden foilage	2 to 3 ft.	.25	2.25	15.00	SYMPHORICARPUS racemosa, Snow-berry	2 to 3 ft.	.15 1.50 10.00
— racemosa (pubens) red fruit	1 to 2 ft.	.25	2.25		— vulgaris, Indian Currant	2 to 3 ft.	.25 2.25 10.00
SASSAFRAS officinale	4 to 6 ft.	.50			SYRINGA, Lilacs. See also Philadelphus.		
SHAD-BUSH. See Amelanchier.					— Japonica, small tree, flowers white,	3 ft.	.50 4.50
SILVER BELL TREE. See Halesia.					— Josikæa, delicate purple flowers,	2 to 3 ft.	.25 2.25 20.00
SMOKE TREE or Purple Fringe. See Rhus Cotinus.					— Pekinensis	4 to 5 ft.	.50 4.50
SNOWBALL. See Viburnum.					— Persica, Persian Lilac, purple	2 to 3 ft.	.25 2.25
SPIRÆA, Anthony Waterer	1 ft.	.25	2.25	20.00	— — var. alba, white	2 to 3 ft.	.25 2.25
— arguta multiflora	2 to 3 ft.	.25	2.25		— — — laciniata, cut-leaved	2 to 3 ft.	.25 2.25
— Billardii	3 to 4 ft.	.25	2.25	15.00	— — — Rothomagensis, purple, 3 to	4 ft.	.25 2.25
— Bumalda	2 ft.	.25	2.25		— — — saugeana, purple	3 to 4 ft.	.25 2.25
— Cantoniensis, fl. pl. (Reevesiana)	3 to 4 ft.	.25	2.25	15.00	— — — alba, light	3 to 4 ft.	.25 2.25
— discolor, var. ariæfolia	2 ft.	.25	2.25	20.00	— villosa, pink	1 to 2 ft.	.50 4.50
— Japonica (callosa), Fortune's red	3 to 4 ft.	.25	2.25	15.00	— vulgaris, Common Purple Lilac	2 to 3 ft.	.25 2.25 15.00
— opulifolia. See Physocarpus	2 to 3 ft.	.25	2.25		— — alba, Common White Lilac	2 to 3 ft.	.25 2.25 15.00
					— — Named varieties as follows: 3	yr. grafts	10 to 18 in. .25 2.25 20.00
					Alba grandiflora, Alexandre von Humboldt (double).		
					Alphonse Lavelle (double), Bertha Damman, Charles X.		

Lemoinei flore pleno (double), Marie Legraye, Mathieu de Dombasle (double), Maxime Cornu (double), President Carnot (double), Senateur Volland (double), Souvenir de L. Spath, Virginite.

TAMARIX Gallica.....3 to 4 ft. EACH. TEN. 100. \$0.25 \$2.25 \$15.00

TARTARIAN HONEYSUCKLE. See Lonicera.

TAXODIUM distichium, Southern Cypress.....2 to 3 ft. .50 2.25

THREE-THORNED ACACIA. See Gleditschia.

TILIA Americana, American Linden
4 to 5 ft. .15 1.25 10.00
— — — — 5 to 6 ft. .25 2.25 20.00

This is one of the best trees for the Sea shore.

— argentea, Silver-leaved Linden
4 to 5 ft. .50
— Europæa, Europæan Linden. 3 to 4 ft. .15 1.25 10.00
— — — — 5 to 6 ft. .50
— platyphylos, broad-leaved Linden
5 to 6 ft. .50

TULIP TREE. See Liriodendron.

ULMUS Americana, American Elm,
5 to 6 ft. .25 2.25 20.00

ULMUS Americana, American Elm,
9 to 10 ft. \$0.35 \$3.00 \$28.00
— — — — 2 in. caliper ...10 to 15 ft. 1.00
— campestre, English Elm...3 to 4 ft. .15 1.25 10.00
— — — — 5 to 6 ft. .25 2.25
— — — — 12 to 15 ft. 1.00
VIBURNUM acerifolium.....1 to 2 ft. .25 2.25
— cassinoides, Withe-rod.....1 to 2 ft. .25 2.25 20.00
— dentatum, Arrow wood...2 to 3 ft. .25 2.25
— dilatatum, red berries...12 to 18 in. .50
— Lantana.....2 to 3 ft. .25 2.25
— lentago.....18 in. .25 2.25
— Opulus, Tree Cranberry...2 to 3 ft. .25 2.25
— — sterilis, common Snowball,
2 to 3 ft. .25 2.25 20.00
— — — — — 4 to 5 ft. .50
— plicatum, Japan Snowball...2 to 3 ft. .50 4.50
— prunifolium.....1 to 2 ft. .25 2.25
— tomentosum.....2 to 3 ft. .50 4.50 40.00

VIRGILEA. See Cladrastis.

WEIGELIA. See Diervilla.

WILLOW. See Salix.

XANTHOCERAS sorbifolia..... .50 4.50
XANTHORHIZA apiifolia..... .25 2.25 15.00
YUCCA filamentosa, evergreen..... .25 2.25 15.00

Hardy Evergreen Shrubs.

EACH. TEN. 100.
ANDROMEDA polifolia \$0.50 \$4.50 \$
ARCTOSTAPYLOS Uva-Ursi, Bear-
berry, trailing vine, from 2 1-2
in. pots25 2.25
BAMBUSA Metake (Arundinaria),
hardy Bamboo..... .25 2.25
BERBERIS aquifolium, Holly-leaved
Mahonia.....1 to 2 ft. .25 2.25 15.00

EACH. TEN. 100.
BUXUS sempervirens, Dwarf Box, fine
plants with ball.....1 ft. \$0.25 \$2.25 \$15.00
COTONEASTER Simonsii, hardiest
sort.....2 ft. .25 2.25
EPIGAEA repens, Mayflower, collected,
very hard to make this plant
grow25 2.25
EUONYMOUS Japonicus, var. radicans .25 2.25 15.00

	EACH.	TEN.	100.
EUONYMOUS Japonicus variegata . . .	\$0.25	\$2.25	\$
ILEX glabra, Ink-berry 1 ft.	.25	2.25	
— opaca, Holly Ito 2 ft.	.25	2.25	
KALMIA latifolia, Mountain Laurel 10 to 15 in.	.50	4.50	
LEUCOTHOE Catesbaei (Andromeda) 1 to 2 ft.	.50	4.50	
— racemosa, deciduous 10 to 12 in.	.25	2.25	20.00
RHODODENDRON Catawbiense, well budded plants about 2 ft.	1.00	9.00	
— English Hybrids, in the hardiest varieties	1.50	15.00	150.00
— maximum, small plants50	4.50	

	EACH.	TEN.	100.
RHODODENDRON maximum, well budded plants . . . 2 ft. and up	\$1.00	\$	\$

I offer about ten of the hardiest varieties of the English grown hybrid Rhododendrons. They are the best Rhododendrons procurable for New England. The plants nice, bushy, well budded stock, from 18 in. to 3 ft., according to variety. The best variety of color.

Use peat or leaf mould freely in planting. Water freely in July and August. In December mulch with about 1 ft. of leaves and protect with pine boughs. Do not take this covering off before the middle of April. Azaleas and Kalmias need the same treatment.

— English grown hybrids. 18 in. to 3 ft. 1.50 15.00 150.00

Conifers.

	EACH.	TEN.	100.
ABIES. See also Picea.			
— balsamea, Balsam Fir 2 ft.	\$0.25	\$2.25	\$15.00
— Canadensis. See Tsuga.			
— Cilicica 2 to 3 ft.	.25	2.25	
— concolor 1 ft.	.25	2.25	
— 2 ft. up	1.00	9.00	
— Fraseri 3 to 4 ft.	.50	4.50	
— Nordmanniana 2 to 3 ft.	.50	4.50	
— pectinata 1 ft.	.25	2.25	
CHAMÆCYPARIS pisifera (Retinos- pora) 1 to 2 ft.	.25	2.25	
— — — var. aurea 1 to 2 ft.	.25	2.25	
— plumosa 2 ft.	.25	2.25	
— — var. aurea 8 to 10 in.	.25	2.25	
— squarrosa 8 to 10 in.	.25	2.25	
HEMLOCK. See Tsuga.			
JUNIPERUS communis, common Creeping Juniper 1 ft. dia.	.25	2.25	20.00
— — var. Dahurica 2 to 3 ft.	.50	4.50	
— — — Hibernica 1 to 2 ft.	.50	4.50	
— Sabina, var. procumbens, small25	2.25	

	EACH.	TEN.	100.
JUNIPERUS Virginiana, Red Cedar or Savin, 1 ft.	\$0.15	\$1.25	\$10.00
— — — — — 2 ft. up	.25	2.25	15.00
PICEA. See also Abies.			
— alba, White Spruce 1 ft. up	.25	2.25	20.00
— excelsa, Norway Spruce 12 to 15 in.	.15	1.25	10.00
— — — — — 2 to 3 ft.	.25	2.25	20.00
— pungens, green form 1 to 2 ft.	.25	2.25	15.00
— — blue form, seedlings 1 to 2 ft.	1.00		
— — — — — color better 1 to 2 ft.	2.00		
— — — — — Koster, grafted 15 to 18 in.	2.00		
— — — — — 2 ft.	3.00		
The last two, imported plants, with balls.			They are nice plants.
PINUS, Austriaca, Austrian Pine around 1 ft.	.15	1.25	10.00
— — — — — 2 ft. or up	.25	2.25	
— Massoniana (Thumbergia) 2 to 3 ft.	.25	2.25	
— Mugho, Dwarf Mountain Pine small15	1.25	10.00
— — — — — around 1 ft.	.25	2.25	20.00



THE SPACE ABOVE IS RESERVED FOR POSTMARK.
POSTAL CARD.
THE SPACE BELOW IS FOR THE ADDRESS ONLY.



FEB 2 1903

VINE SEEDS.

Surplus Stock Wholesale Prices

I offer you F. O. B. Pedricktown, N. J., subject to being unsold the following varieties of seed crop 1902, selected and true to name.

	Per Pound.
400 lbs. Blue Gem, (new),	@ \$.20
100 " Sweet Heart,	@ .20
100 " Coles Early,	@ .20
300 " Triumph,	@ .22
300 " Kolb Gem,	@ .20
100 " Ferrys Iceberg, (new),	@ .25
200 " Dark Icing,	@ .25
100 " Light Icing,	@ .25
200 " Dixie,	@ .22
100 " Klecklog Sweets,	@ .30
<hr/>	
50 " Early White Bush Squash,	@ .25
10 " Chinese Giant Pepper,	@ 2.50
10 " Ruby King	@ 1.50
15 " Early Cluster-Cucumber Strictly Pure	@ 1.00
25 " White Spine,	@ 1.00
100 " Jenny Lind Cantaloupe,	@ .30
100 " Jersey Belle,	@ .30
50 bus. New Eureka Potatoes, 2nd size, (Of which I am the originator)	@ 1.00 per bus.
<hr/>	
100 bus. Early Fortune, 1st size,	@ 1.00 " "
5 bus. Burlington Hybrid-Corn,	@ 1.50 " "

Pedrick Perfected Golden Beauty Field Corn

At \$1.25 Per Bushel,

Tipped and butted by hand. Extra selected stock.

Samples of Seeds on request.

All bags at cost.

Trusting to be favored with your valued order, which will have my personal and prompt attention, I am

Yours Truly,

GEO. R. PEDRICK,

Seed Grower,

Pedricktown,

New Jersey.

APR 16 1903

	EACH.	TEN.	100.		EACH.	TEN.	100.
PINUS rigida, Pitch Pine	2 to 3 ft.	\$0.25	\$2.25	\$15.00	TAXUS baccata, var. variegata . . .	1 ft.	\$0.50 \$ \$
— Stropus, White Pine8 to 10 in.	.15	1.25	10.00	— cuspidata, Japanese Yew, perfectly		
— — — — —	.12 in. up	.25	2.25	15.00	hardy, very small plants25	2.25
— Sylvestris, Scotch Pine12 in. up	.15	1.25	10.00	— — — — —	1 ft.	1.00
— — — — —	.2 to 3 ft.	.25	2.25		THUYA occidentalis, American Arbor		
PSEUDOTSUGA Douglassi, Douglas					Vitæ3 to 4 ft.	.35 3.00
Fir, Colorado form12 to 18 in.	.25	2.25	15.00	— — — — —	.5 to 6 ft.	.50 4.50
RETINOSPORA. See Chamæcyparis.					— — lutea, golden6 to 8 in.	.25 2.25
TAXUS baccata, English Yew, re-					— Siberica, Siberian Arbor Vitæ		
quires protection1 ft.	.25	2.25		18 to 25 in.	.25	2.25 20.00
— — — — —	.3 ft.	1.25			TSUGA Canadensis, Hemlock	1 ft.	.15 1.25 10.00
					— — — — —	.18 to 24 in.	.25 2.25 15.00

Hardy Vines and Climbers.

	EACH.	TEN.	100.		EACH.	TEN.	100.
ACTINIDIA arguta3 to 4 ft.	\$0.50	\$4.50	\$	CLEMATIS Virginiana, white	\$0.15	\$1.25 \$
AKEBIA quinata, fine Japanese vine25	2.25		— Vitalba, white15	1.25
AMPELOPSIS quinifolia, Virginia					EUONYMOUS Japonicus, var. radicans		
creeper or Woodbine15	1.25	10.00	evergreen25	2.25	20.00
— — var. Englemanni25	2.25	15.00	HEBERA helix, English Ivy, hardy			
— Veitchii, Boston Ivy, 3 years from				form, small plants25	2.25	
open ground25	2.25	20.00	HYDRANGEA scandens, Climbing			
APIOS tuberosa15	1.50	10.00	Hydrangea, small plants50	4.50	
ARISTOLOCHIA siphon, Dutchman's				IPOMÆA pandurata, a hardy, peren-			
Pipe35	3.00		nial morning glory25	2.25	
BIGNONIA radicans (Tecoma), Trum-				LONICERA Japonica, Japanese Honey-			
pet Vine25	2.25	15.00	suckle25	2.25	
CELASTRUS paniculata25	2.25		— — var. Halleana, Hall's Japan			
— scandens, Roxbury Waxwork25	2.25		Honeysuckle25	2.25	20.00
CLEMATIS coccinea50	4.50		Hall's Japan Honeysuckle was first introduced by the			
— large flowered in following varieties,				O. C. N. in the sixties. There has been nothing intro-			
strong plants50	4.50	40.00	duced since to take it's place. It is the best of all the			
Gem, blue; Gipsy Queen, purple; Henryi, white; Jack-				climbing honeysuckles.			
manii, blue; Mme. Lecoultre, white; Standishi, blue.				— Periclymenum (Belgica), the Dutch			
— paniculata25	2.25	20.00	Monthly Honeysuckle25	2.25	
This is the white Japanese Clematis. All who see this				— sempervirens, Scarlet Trumpet25	2.25	
plant want it.				— Sulvantii (flava), Yellow Trumpet25	2.25	

Pedricktown, N. J. APR 16 1903 New Jersey.

	EACH.	TEN.	100.		EACH.	TEN.	100.
LYSIUM vulgare, Matrimony Vine....	\$0.25	\$2.25	\$	offered are single stem layers,			
MENISPERMUM Canadense, Moon-				the count liberal	\$	\$1.00	\$ 6.00
seed25	2.25		WISTERIA Chinensis, blue.....	.25	2.25	
PERIPLOCA Græca, Virginia silk....	.25	2.25	20.00	— — white35		
ROSES climbing sorts. See Rosa.....	.25	2.25		— frutescens, American blue.....	.25	2.25	15.00
VINCA minor, running myrtle or Per-				— multijuga, blue, clusters 3 ft. long..	.50	4.50	
winkle, in mixed colors, plants				— white — — —75	7.00	

Fruit Trees, Grapes, Small Fruits, Asparagus and Rhubarb.

	EACH.	TEN.	100.		EACH.	TEN.	100.
APPLES¾ in. caliper, 5 to 7 ft.	\$0.30			PEACHES	4 to 5 ft	\$0.15	\$1.40 \$
SUMMER.		WINTER.		Champion,	Mountain Rose,		
Early Harvest,		Baldwin,		Crawford's Early,	Old Mixon Free,		
Red Astrachan,		Ben Davis,		Crawford's Late,	Stump of the World,		
Tetofsky.		Fameuse,		Crosby,	Wheatland,		
		Hubbardston,		Foster,	Elberta,		
AUTUMN.		Northern Spy,		PLUMS, European varieties ..	5 to 7 ft.	.40	
Gravenstein,		Rhode Island Greening,		Bradshaw,	Lombard,		
Maiden's Blush,		Russet Golden,		Coe's Golden Drop,	Washington,		
Porter.		Russet Roxbury,		German Prune,	Yellow Egg.		
PEARS	5 to 7 ft.	.40		Green Gage,			
SUMMER.		WINTER.		PLUMS, Japanese varieties ...	5 to 7 ft.	.40	
Osband's Summer.		Bartlett,		Abundance,	Red June,		
		Beurre Bosc,		Burbank,	Wickson,		
AUTUMN.		Clapp's Favorite,		Chabot,			
Beurre d'Anjou,		Duchess of Angouleme,		QUINCE	3 to 4 ft.	.25	
Lawrence.		Louis Bonne de Jersey,		Champion,	Orange,		
CHERRIES.....	5 to 7 ft.	.40		Sheldon.			
Black Tartarian,		Windsor, black,		GRAPES	two years	.15	1.40 10.00
Early Richmond,		Smith's,		Concord, black,	Agawam, red,		
May Duke,		Yellow Spanish.		Early Ohio, black,	Brighton, red,		
Napoleon,,				Moore's Early, black,	Delaware, red,		
				Wilder, black,	Salem, red,		
				Niagara, white,	Perkins, white.		

	EACH.	TEN.	100.		EACH.	TEN.	100.
BLACKBERRIES	\$	\$.50	\$ 4.00	GOOSEBERRIES, Industry, two years	\$0.20	\$1.80	\$
Lucretia (Dewberry), Snyder,				RASPBERRIES50	4.00	
Kittatiny,				Cuthbert,			
CURRANTS	two years.	1.00	8.00	Miller's,	Blackcap,		
Black Naples,	Cherry, red,			Turner,			
White Grape,	Fays's prolific, red,			ASPARAGUS, Conovers Colossal, two		.75	2.00
GOOSEBERRIES, Downing, two years,	.15	1.40	10.00	years			
				RHUBARB, Linnæus15	1.40	

For Fruit Trees wanted in quantity, prices will be given on application.

Decorative Perennial Herbaceous Plants.

These plants are all hardy and produce an immediate effect, as they bloom the first year they are planted. They should be planted in the autumn, which is the best time for planting herbaceous plants, and should be covered with a forkful of dung to protect them from being thrown out by the frost. They may be planted in the spring, also, with great success. I offer the following choice collections of my own selection, in the very finest and most useful sorts. This class of plants is fast taking the place of bedding plants, as they do not have to be renewed every year.

Collection of 12 choice sorts, all different, named, \$2.50
 Collection of 24 choice sorts, all different, named, 4.50
 Collection of 50 choice sorts, 3 of a kind, named, \$ 5.00
 Collection of 100 choice sorts, 3 of a kind, named, 10.00

	EACH.	DOZ.	100.		EACH.	DOZ.	100.
ACHILLEA ptarmica, double white, for cut flowers	\$0.15	\$1.50	\$8.00	ANTHEMIS tinctoria, Chamomile	\$0.15	\$1.50	\$
— serrata, The Pearl, fine, new double white, for cut flowers, extra.....	.25	2.50	10.00	ANTHERICUM liliastrum, St. Bruno lily25	2.50	
AGROSTEMMA coronaria15	1.50	10.00	APIOS. See Vines.			
— Flos Jovis25	2.50		AQUILEGIA Canadensis, Wild Columbine15	1.50	10.00
ALTHÆ rosea, Hollyhock, Chater's best strain, choice colors, extra fine, double15	1.50	10.00	— chrysantha, columbine, the best yellow15	1.50	10.00
ALYSSUM saxatile, Gold Dust15	1.50		— — Hybrids15	1.50	10.00
ANEMONE, Japonica rosea elegans25	2.50		— cœrulea, fine blue15	1.50	10.00
— — d'Argent25	2.50		— — Hybrids15	1.50	10.00
— — Honorine Joubert, white25	2.50		— glandulosa15	1.50	10.00
— — pink25	2.50		— fine mixed Columbines15	1.50	10.00
— — Pennsylvanicum15	1.50					

These Columbines are all very choice, and among the most showy plants of the garden.

	EACH.	DOZ.	100.
ARABIS alpina, very early, white	\$0.15	\$1.50	\$
ARMERIA, Thrift15	1.50	
ARUNDINARIA Japonica (Bambusa Metake), fine dwarf bamboo, hardy25	2.50	15.00
ASCLEPIAS tuberosa, Butterfly Weed, good plants that have already bloomed10	1.00	4.00
— strong plants, fine15	1.50	10.00
This is one of our finest native herbaceous plants, blooming all summer. Its rich orange flowers are very showy. It is much used now in large masses for cemeteries, parks, and all public and private grounds. It is one of the most effective plants in landscape gardening.			
ASTER Novæ-Angliæ, Aster, Starwort, or Michaelmas daisy, purple flowers15	1.50	10.00
— — — var. rosea, pink flowers15	1.50	10.00
— other native species mixed15	1.50	10.00
These are among the finest of late blooming flowers.			
ASTILBE (Spiræa) Japonica15	1.50	10.00
— — — compacta multiflora25	2.50	15.00
These are much used for forcing.			
AUBRIETIA deltoidea25	2.50	
BAPTISIA australis25	2.50	15.00
BOCCONIA Japonica15	1.50	
CAMPANULA Carpatica, blue or white25	2.50	
— medium, Canterbury Bells, double and single sorts in variety15	1.50	10.00
CASSIA, Marylandica25	1.50	
CHRYSANTHEMUM, choicest hardy sorts15	1.50	10.00

	EACH.	DOZ.	100.
I have a fine stock in named varieties of the hardiest and most beautiful Chrysanthemums for the open ground.			
CLEMATIS Davidiana, blue, new, shrubby	\$0.35	\$3.50	\$
For running sorts see Vines.			
COLUMBINE. See Aquilegia.			
CONVALLARIA majalis, Lily of the Valley, nice clumps10	1.00	4.00
— — beautifully striped leaves, clumps They are not prepared for forcing.	.25	2.50	15.00
COREOPSIS grandiflora15	1.50	10.00
— lanceolata15	1.50	10.00
DELPHINIUM elatum, Hybrid Larkspur15	1.50	10.00
— grandiflorum (Chinense), Chinese Larkspur15	1.50	10.00
DIANTHUS barbatus. Sweet Williams double and single varieties15	1.50	10.00
DICENTRA spectabilis (Dielytra), Bleeding Heart15	1.50	10.00
DICTAMNUS (Fraxinella), albus, white25	2.50	
— — var. rubra, red25	2.50	
DIGITALIS purpurea, Foxglove, in variety10	1.00	6.00
EPIMEDIUM, good sorts25	2.50	
ERIANTHUS Ravennæ, beautiful pampas-like grass with purple plumes 6 ft.25	2.50	
ERIGERON speciosum25	2.50	
EULALIA Japonica, var. variegata, tall striped25	2.50	
— Zebrina, with variegated horizontal bands25	2.50	
EUPATORIUM ageratoides25	2.50	
FERNS, choice hardy sorts25	2.50	15.00

Cemetery lots with the whole surface planted with ferns are very pleasing. I send the best sort for this purpose for \$10 per 100.

	EACH.	DOZ.	100.
FORGET-ME-NOT. See <i>Myosotis</i> .			
FOXGLOVE. See <i>Digitalis</i> .			
FUNKIA grandiflora, white flowers....	\$0.25	\$2.50	\$
— lancefolia, lilac flowers25	2.50	
— ovata, bluish-lilac flowers25	2.50	
— — var. marginata25	2.50	
— Sieboldiana with large glaucous leaves25	2.50	
— subcordata, Day lily, pure white flowers blooming in August15	1.50	10.00
These showy Plantain lilies I offer in a fine assortment of the best varieties15	1.50	
GAILLARDIA grandiflora, very showy	.15	1.50	10.00
GERANIUM sanguineum, var. Lancastriense, a very beautiful English variety, bright magenta15	1.50	10.00
GILLENIA trifoliata (<i>Spiræa</i>)25	2.50	
GYPSOPHILA glauca25	2.25	
— paniculata, very delicate and beautiful with cut flowers25	2.50	
HELENIUM autumnale15	1.50	10.00
HELIANTHUS grandiflorus, single25	2.50	
— Maximiliana25	2.50	
HEMEROCALLIS Dumortieri, orange yellow10	1.00	6.00
— flava, lemon-yellow10	1.00	6.00
HEMEROCALLIS fulva, tawny brown (\$35 per 1000), for covering embankments or rough or unsightly spots, very useful.....	.10	.75	4.00
— — var. fl. pl., Double tawny brown	.15	1.50	10.00
— Thunbergii, lemon-yellow like H. flava, but later25	2.50	
HIBISCUS Moscheutos, Marsh Mallow	.15	1.50	10.00

Very choice plants for masses, blooming for a long period in mid-summer.

	EACH.	DOZ.	100.
HIERACIUM aurantiacum, rich orange,	\$.15	\$1.50	\$10.00
HOLLYHOCK. See <i>Althæa</i> .			
IBERIS Gibraltica, Hardy Candituft....	.25	2.25	
— sempervirens25	2.25	
— Ternoneana25	2.25	
IRIS cristata, dwarf, beautiful15	1.50	10.00
— Germanica, in great variety15	1.50	10.00
These beautiful hardy garden Iris are among the most desirable plants for the border. The sorts here offered are very varied.			
— Japan or Kæmpfer's15	1.50	10.00
— 12 superb sorts, named colors		2.00	
I have one of the finest collections possible of this celebrated Iris. The gorgeous flowers are often compared to orchids, and are decidedly the most showy of all the products of the garden. They vary much in color. All are hardy.			
IRIS pseudacorus yellow, fine25	2.50	
— Siberian, lovely25	2.50	
— versicolor15	1.50	10.00
LARKSPUR. See <i>Delphinium</i> .			
LATHYRUS latifolius, rose. Hardy			
Perennial Pea15	1.50	10.00
— — white15	1.50	10.00
LIATRIS pchnostachya, Kansas Gay			
Feather25	2.50	15.00
— scariosa10	1.00	6.00
L. scariosa is very effective planted in masses.			
LILIUM auratum, Golden-Banded Lily	.15	1.50	
— candidum, Ascension Lily10	1.00	
— speciosum album, Japanese Lily15	1.50	
— — roseum15	1.50	
— tigrinum, Tiger Lily10	1.00	
— umbellatum, orange-red10	1.00	
LILY OF THE VALLEY. See <i>Convallaria</i> .			

	EACH.	DOZ.	100.		EACH.	DOZ.	100.
LOBELIA cardinalis, Cardinal Flower, intense red. This fine perennial is of easy cultivation in gardens, where it blooms all summer. It is much used now for its bril- liant landscape effect. Plants that will bloom the first year... — — stronger plants that will bloom the first year	\$0.10	\$1.00	\$ 4.00				
— Syphilitica, blue15	1.50	10.00				
LUPINUS polyphyllus, Perennial Lu- pine25	2.50					
LYCHNIS chalcedonia, London Pride15	1.50	10.00				
LYSIMACHIA clethroides, fine, from Japan15	1.50	10.00				
LYSIMACHIA nummularia, Money- wort, pretty for vases15	1.50	10.00				
MALLOWS. See Hibiscus.	.10	1.00	6.00				
MERTENSIA Virginica, Lung-wort15	1.50	10.00				
MITCHELLA repens, Partridge Berry15	1.50	10.00				
MONARDA didyma15	1.50					
MYOSOTIS palustris, Forget-me-nots, sorts15	1.50	10.00				
GENOTHERA, Evening Primrose, sorts15	1.50	10.00				
OROBUS vernus25	2.50					
— rose25	2.50					
PANSIES, in very choice sorts10	.50	3.00				
PAPAVER bracteatum15	1.50	10.00				
— involucratum maximum15	1.50	10.00				
— orientale (large oriental poppy)15	1.50	10.00				
The above are the great Asiatic poppies, perfectly hardy producing immense deep blood red and crimson flowers, with various markings. They are among the most showy flowers known, and should be in every garden. Very fine in masses in public grounds.							
PAPAVER nudicaule, the Iceland Pop- py, choice15	1.50	10.00				
PARDANTHUS sinensis, Blackberry Lily25	2.50	15.00				
PENTSTEMON, fine mixed sorts.....	\$0.15	\$1.50	\$				
PEONIES. See page 18.							
— named varieties25	2.50	20.00				
— mixed, unnamed		1.50	10.00				
PHALARIS arundinacea variegata10	1.00	6.00				
PHLOX, hybrids, a good collection....	.15	1.50					
I offer this year twenty-four named varieties of the best Phlox recently introduced.							
PLATYCODON grandiflora, blue15	1.50	10.00				
— — blue and white striped15	1.50	10.00				
— — white15	1.50	10.00				
— — mixed sorts10	1.00	6.00				
— — var. Mariesii25	2.50					
POLYANTHUS. See primula.							
POLYGONATUM multiflorum, Solo- mon's Seal.....	.25	2.50					
POLYGONUM amplexicaule, Mountain Fleece15	1.50					
— cuspidatum (Sieboldii), a very rapid growing plant for covering rough places10	1.00	6.00				
PRIMULA officinalis (Polyanthus), fine gold laced varieties15	1.50	10.00				
PYRETHRUM hybrid sorts, colored Daisies, a good collection of sin- gle varieties25	2.50	15.00				
— uliginosum, the Great Ox Eye Daisy, white15	1.50	10.00				
RUDBECKIA laciniata15	1.50					
— — Golden Glow15	1.50					
— maxima15	1.50					
— speciosa15	1.50	10.00				
SABBATIA chloroides10	1.00	6.00				
This beautiful plant is now largely planted on the borders of brooks, lakes and moist meadows. It is one of the most charming of our native flowers, blooming all summer, rich rose, showy.							
SANGUINARIA canadensis, Bloodroot15	1.50					
SOLIDAGO, golden rods, fine sorts....	.15	1.00	6.00				

	EACH.	DOZ.	100.
SPIRÆA, Aruncus, Goat's Beard, white	\$0.15	\$1.50	\$
— Filipedula, white15	1.50	10.00
— — var. fl. pl., double white15	1.50	
— Japonica. See Astilbe.			
— palmata, rosy crimson15	1.50	
— — var. elegans, white15	1.50	
— Uimaria, double white25	2.50	
— — variegata picta25	2.50	
SWEET WILLIAMS. See Dianthus.			
THERMOPSIS Caroliniana, excellent	.25	2.50	
THYMUS Serpyllum, var. aurea, Gold- en Thyme15	1.50	
VERNONIA Novaboracensis, Ironweed	.25	2.50	
VINCA. See Vines, sorts15	1.50	6.00
VIOLA cornuta in colors15	1.50	10.00
— cucullata, white and blue15	1.50	
— Florida, blue fragrant15	1.50	

	EACH.	DOZ.	100.
VIOLA odorata, English blue.....	\$0.15	\$1.50	\$10.00
— — — white15	1.50	10.00
— — Schönbrunn15	1.50	10.00
— pedata15	1.50	10.00

These violets are all perfectly hardy. Viola cucullata, rich blue, is very much esteemed abroad for its fine effect in plantations forming great clumps and blooming profusely. The English violets are very sweet and should be in every garden. Schönbrunn is very fragrant and was a great favorite of Unser Fritz, and was named from his palace and grounds in Germany, where it originated.

Schönbrunn and English white are very useful to plant freely on the borders of avenues, etc., and will perfume your whole estate.

WAHLENBERGIA. See Platycodon.

I will furnish 1,000 herbaceous plants of my own choice, fine sorts, for \$100.

Tender Bulbs.

To be kept in the cellar in winter like dahlias.

	DOZ.	100.		DOZ.	100.
GLADIOLUS, scarlet, mixed.....	\$0.25	\$1.50	GLADIOLUS, striped, mixed	\$0.40	\$2.50
— pink, mixed30	2.00	— yellow, mixed50	3.00
— white, mixed35	2.25	— choice, mixed25	1.50

Peonies—New Chinese and Japanese Herbaceous.

Well established plants from the open ground.

These fine Japanese and Chinese Peonies are well known to be the most showy flowers in cultivation, and are particularly adapted to our climate. They are entirely hardy and bloom a long time. They are accordingly very much used now for large masses in cemeteries, parks and pleasure grounds; and may be followed by Lemoine's beautiful new French Gladiolus, the stiff foliage helping to support the spikes of the gladiolus. Gladioli should be planted among the peonies in May.

Plants are twenty-five cents each, your choice. Twelve, all different, named sorts, my choice, \$2.50. Twenty-five, all different, named sorts, my choice, \$5.00. For cheaper plants, unnamed, see below.

Plants are divided of these named varieties. They will have from one to three eyes. When planted in the fall about 80 per cent. bloom the following year.

- ALEXANDER MECHIN. Dark crimson with yellow stamens.
- BUYCKII. Brilliant rose with salmon center, full double.
- CAMILLE CALOT. Very dark rich rose, one color.
- CHARLES DE BELLYME. Brilliant violet purple.
- COMTE DE NEIPPERG. Bright amaranth carmine.
- DELACHII. Rich deep amaranth, full double.
- EDOUARD ANDRE. Dark crimson with yellow stamens.
- EDULES SUPERBA. Full double large pink.
- FAUST. Light. Large white, center flecked with red, 50 cents each.
- FRANCOIS FIRST. Pink, center salmon flecked with red, free bloomer.
- LOUIS VAN HOUTTE. Crimson, extra good bloomer.
- LUCRECE. Rosy peach, center rosy white.
- MME. CHENEY. Pink shaded to white, extra large.
- MME. FURTADO. Deep violet rose, center bright salmon.
- MME. BERNARD. Soft rose, large full double.
- MARECHAL VAILLANT. Very large full double, deep pink.
- MARQUISE DE LA TOURETTE. Brilliant purple wine.
- NE PLUS ULTRA. Fine, full double, rosy pink.
- PAGANINI. Brilliant rose, salmon center.
- POTTSI PLENA. Dark red.
- PURPUREA SUPERBA. Large, dark red.
- SOUVENIR D'AUGUSTE MIELLEZ. Rich violet purple, cup-shaped.
- SOUVENIR DE PORTEAU. Flesh color and light yellow.
- SUPERBISSIMA. Full double, pink shading to white.
- VICTORIE MODESTE. Rich pink, center pink and white.
- VIRGINIE. Large, delicate blush suffused with pink.
- WASHINGTON. Bright red, center light salmon red.

PEONIES, mixed colors, without names, per dozen, \$1.50; per hundred, \$10.00.

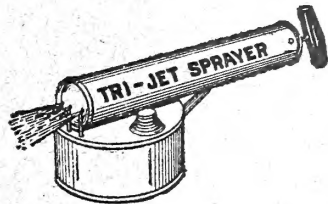
Pæonia Officinalis.

These Peonies are very desirable, as they bloom a week or ten days earlier than the preceding sorts. Jacqueminot is double, the others are single. Price: 25 cents each; \$2.50 per dozen.

PEONIA officinale, single red.

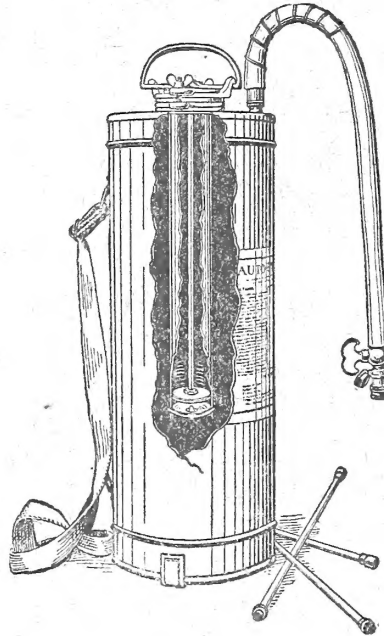
PEONIA officinale, double red.

The "New Era Sprayer."



Auto-Spray No. 1, Galvanized Steel Tank,	\$5.00
Auto-Spray No.1, Brass Tank,	6.50
Auto-Spray No. 2, Brass Tank with agitator, (no barrel)	12.00
Auto-Spray No. 2, Brass Tank with agitator, (with barrel)	14.00
Auto-Spray No. 3, Galvanized Steel Tank,	2.00
Auto-Spray No. 3, Brass Tank,	3.00
New Era Galvanized Reservoir,	.75

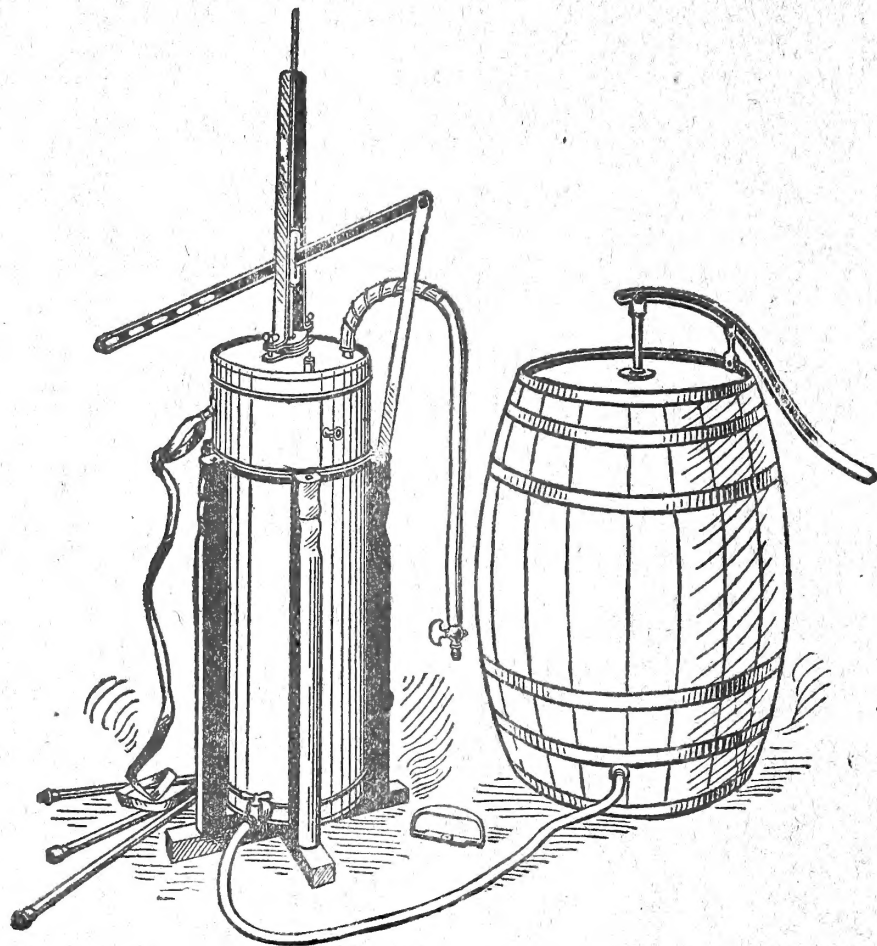
Auto-Spray No. 1



EXTRAS

Extension Pipes, 2 feet lengths, Galvanized Steel, Brass ends,	\$.30
Extension Pipes, 2 feet lengths, solid brass,	.35
Elbow connection, solid brass,	.35
Safety Valve, solid brass,	.25
Auto-Spray Torch,	1.00
Bicycle Pump Fitting,	.25
Anti-Fire (one charge for Auto-Spray No. 1 or No. 2)	.75
Vermorel Nozzle,	1.00
Bordeaux Nozzle,	1.00

See also back cover.



AUTO-SPRAY NO. 2
(See inside cover.)